

## **Montageanleitung**

*Oval Innenleuchte*

## **Mounting instructions**

*Oval interior lamp*

## **Instructions de montage**

*Lampe d'intérieur ovale*

## **Monteringsanvisning**

*Oval innerlampa*

## **Montagehandleiding**

*Ovale interieurverlichting*

## **Instrucciones de montaje**

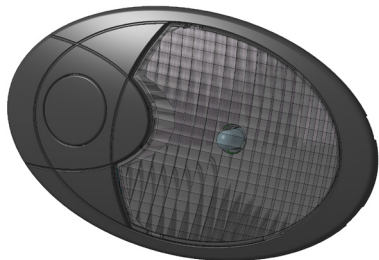
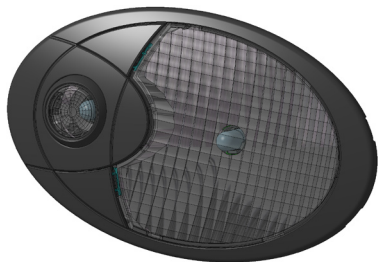
*Lámpara interior ovalada*

## **Istruzioni di montaggio**

*Lampada ovale da interno*

## **Asennusohje**

*Ovaali sisävalo*



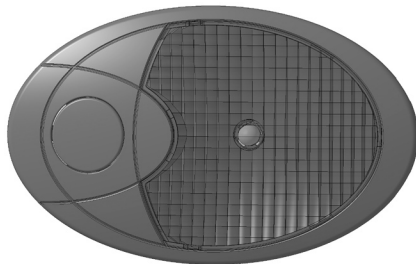
Lieferumfang  
Kit includes  
Fourniture

Leveransomfattning  
Inhoud set  
Volumen del suministro

Dotazione di fornitura  
Osaluettelo

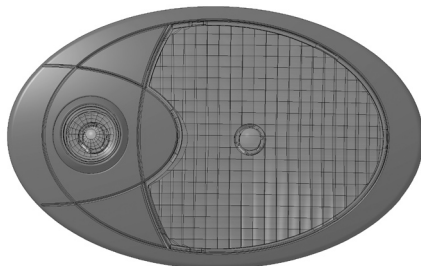
**2JA 009 294-00**

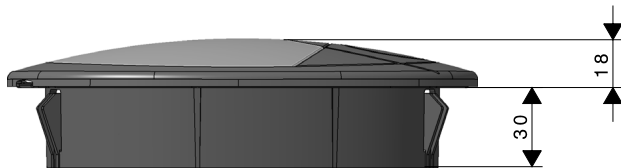
1 x



**2JA 009 294-02**

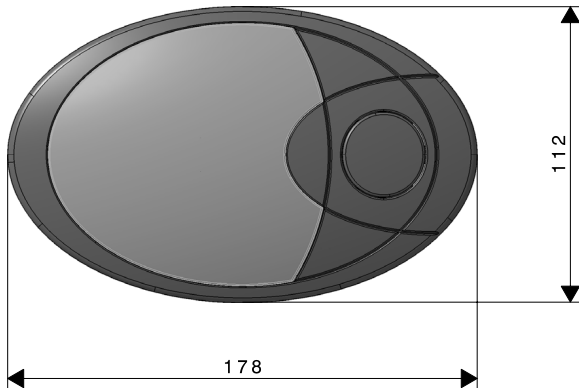
1 x

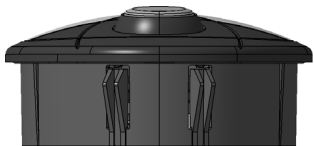




3

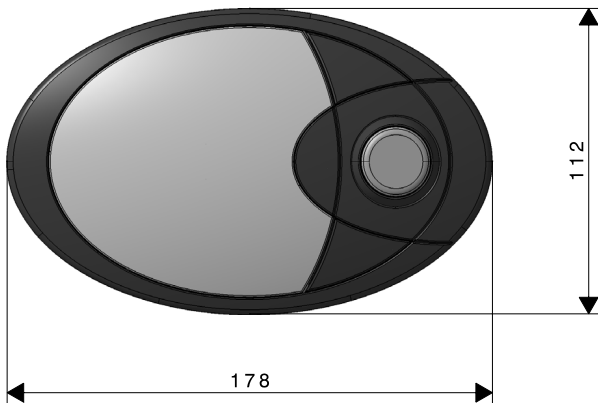
**2JA 009 294-00**



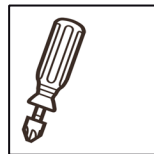
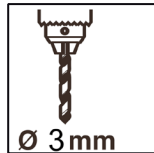
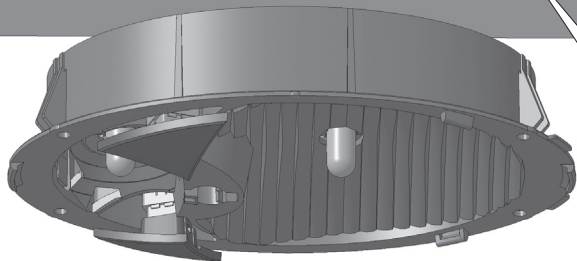


4

**2JA 009 294-02**



5

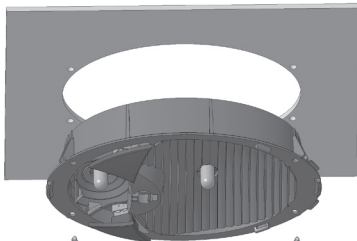


Befestigung mit Schrauben  
Mounting with screws  
montage avec vis

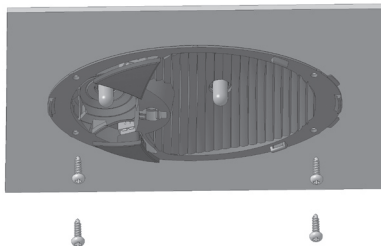
skruvmontering  
montage met schroeven  
montaje con tornillos

montaggio con viti  
Ruuviasennus

1



2



Nicht im Lieferumfang enthalten  
Not included with kit  
Non fornita  
Ingår ej i leveransen  
Worden niet meegeleverd  
No se incluyen en el suministro  
Non in dotazione  
Eivät kuulu toimitukseen

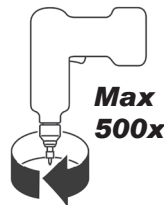


**M max 1.5 Nm**

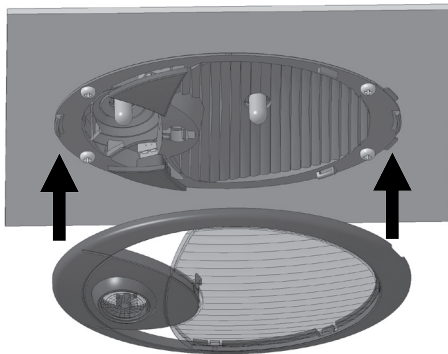
**4 X**



**ø3,5 mm**

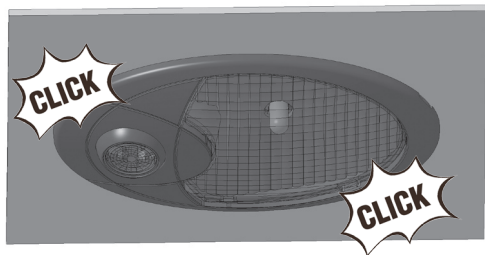


3



7

4

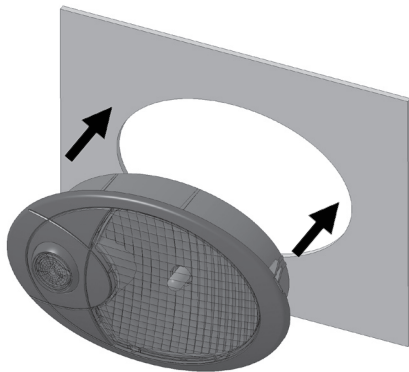


Schnapp-Montage  
Snap-on mounting  
montage par clipsage

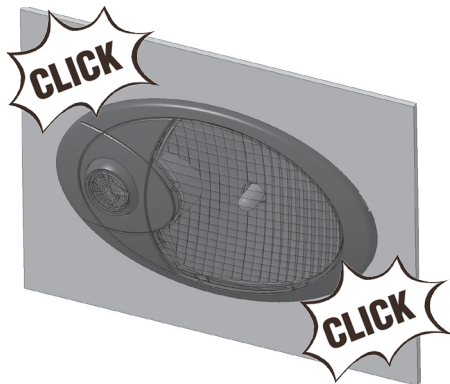
snäppmontering  
montage d.m.v. opklikken  
montaje por clips

montaggio "snap-on"  
Snap asennus

1



2





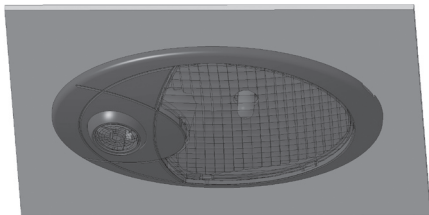
Lampenwechsel  
Changing the bulb  
Remplacement de la lampe

Glödlampsbyte  
De gloeilamp vervangen  
Cambio de lámparas

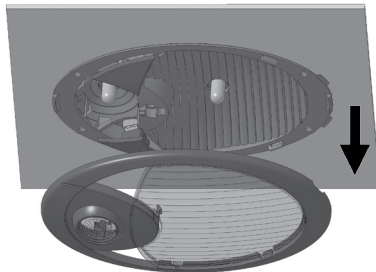
Sostituzione del tubo  
lampeggiatore  
Polttimon vaihto

9

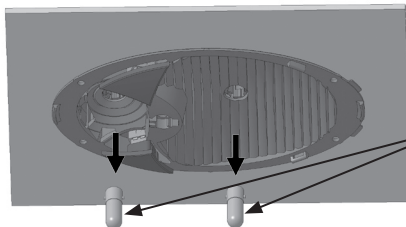
1



2



3



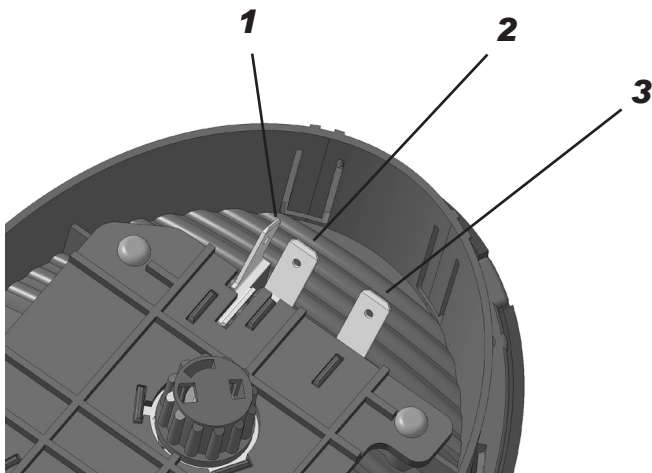
**max 5W BA9s**  
**Hella part no. 8GA 310 128-001**

1 = Masse, Ground, Masse, Jord, Massa, Masa, Terra, Maa

2 = Türschalter, Door switch, Interrupteur de porte, Dörrbrytare, Deurschakelaar, Interruptor de puerta, Interruttore porta, Ovikytkin

3 = Versorgungsspannung +, Power supply +, Alimentation électrique +, Försörjning +, Voedingsspanning +, Tension de alimentación +, Tensione de alimentazione +, syöttöjännite +

10



**Technische Daten**

Ovale Innenleuchte

Art.-Nr.	2JA-	009 294-00	009 294-02
Eingangsspannung Stromaufnahme		12 V 0,5 A	12 V 1,0 A
Materialien	Gehäuse: PC, Lichtscheibe: PC, Rahme: PC, Schalterkappe: PC		
IP Klasse	3X		

**Technical Data**

Oval interior lamp

Part No	2JA-	009 294-00	009 294-02
Input voltage Current consumption		12 V 0,5 A	12 V 1,0 A
Materials	Housing: PC, Lens: PC, Frame: PC, Switch cap: PC		
IP Class	3X		

**Données Techniques**

Lampe d'intérieur ovale

Référence	2JA-	009 294-00	009 294-02
Tension d'entrée Consommation de courant		12 V 0,5 A	12 V 1,0 A
Matériaux	Boîtier: PC, Voyant: PC, Enjoliveur: PC, capuchon d'interrupteur: PC		
Classe IP	3X		

**Teknisk Information**

Oval innerlampa

Artikelnr	2JA-	009 294-00	009 294-02
Inspänning Strömförbrukning		12 V 0,5 A	12 V 1,0 A
Material	Kåpa: PC, Lins: PC, Ram: PC, brytarlock: PC		
IP klass	3X		

**Technische Gegevens**

Ovale interieurverlichting

Artikelnr.	2JA-	009 294-00	009 294-02
Ingångsspanning Stroomopname		12 V 0,5 A	12 V 1,0 A
Materialien	Huis: PC, Lens: PC, Frame: PC, schakelaarkapje: PC		
IP Klasse	3X		

**Datos Técnicos**

Lámpara interior ovalada

Nºde artículo	2JA-	009 294-00	009 294-02
Tensión de entrada Consumo de corriente		12 V 0,5 A	12 V 1,0 A
Materiales	Caja: PC, Lente: PC, Marco: PC, capuchón de interruptor: PC		
Clase IP	3X		

**Dati Tecnici**

Lampada ovale da interno

N. art.	2JA-	009 294-00	009 294-02
Tensione di ingresso Assorbimento di corrente	12 V 0,5 A	12 V 1,0 A	
Materiali	Scatola: PC, Lente: PC, Telaio: PC, cappuccio interruttore: PC		
Classe IP	3X		

**Tekniset Tiedot**

Ovaali sisävalo

Tuotenro.	2JA-	009 294-00	009 294-02
Jännite Virtankulutus	12 V 0,5 A	12 V 1,0 A	
Materiaalit	Runko: PC, Lasi: PC, Kehys: PC, kytkinpainikkeet: PC		
IP Luokka	3X		

